

# Opening perspective in five steps

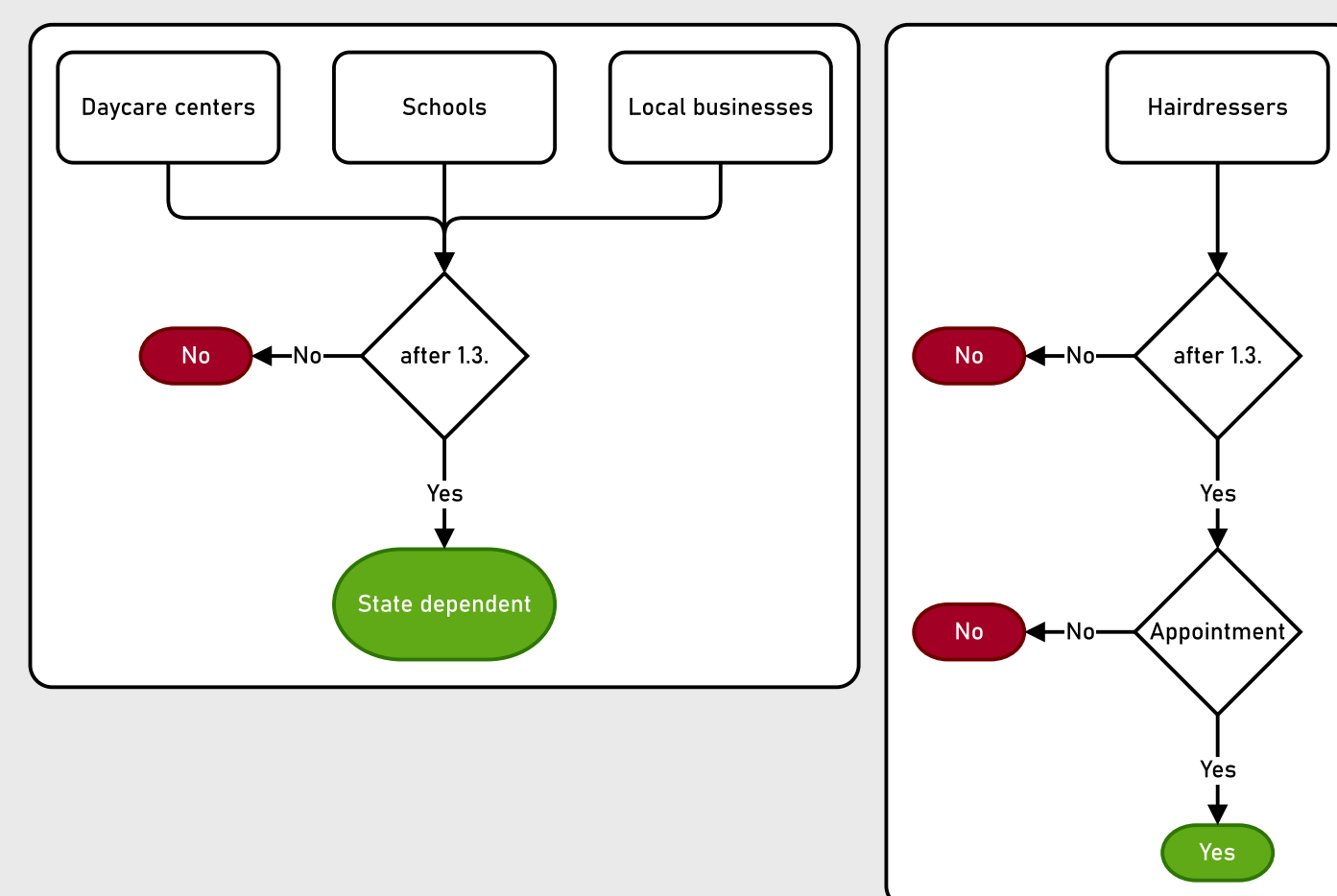
As of: 07.03.2021 Version 1.1.0

Text and idea: German Federal Government. For more information visit <https://www.bundesregierung.de/breg-de/aktuelles/ueffent-oeffnungsschritte-187229>  
Visualization: Daniel Fehn. For the current version visit <https://daniel-fehn.github.io/Offen-in-5-Flowchart>

## 1. Opening step

Schools, daycare centers, hairdressers

The first opening step already took place on March 1. In view of falling infection figures, areas of schools and daycare centers were able to reopen. Hair salons have also reopened nationwide under hygiene requirements. In addition, there are individual further openings in the states.

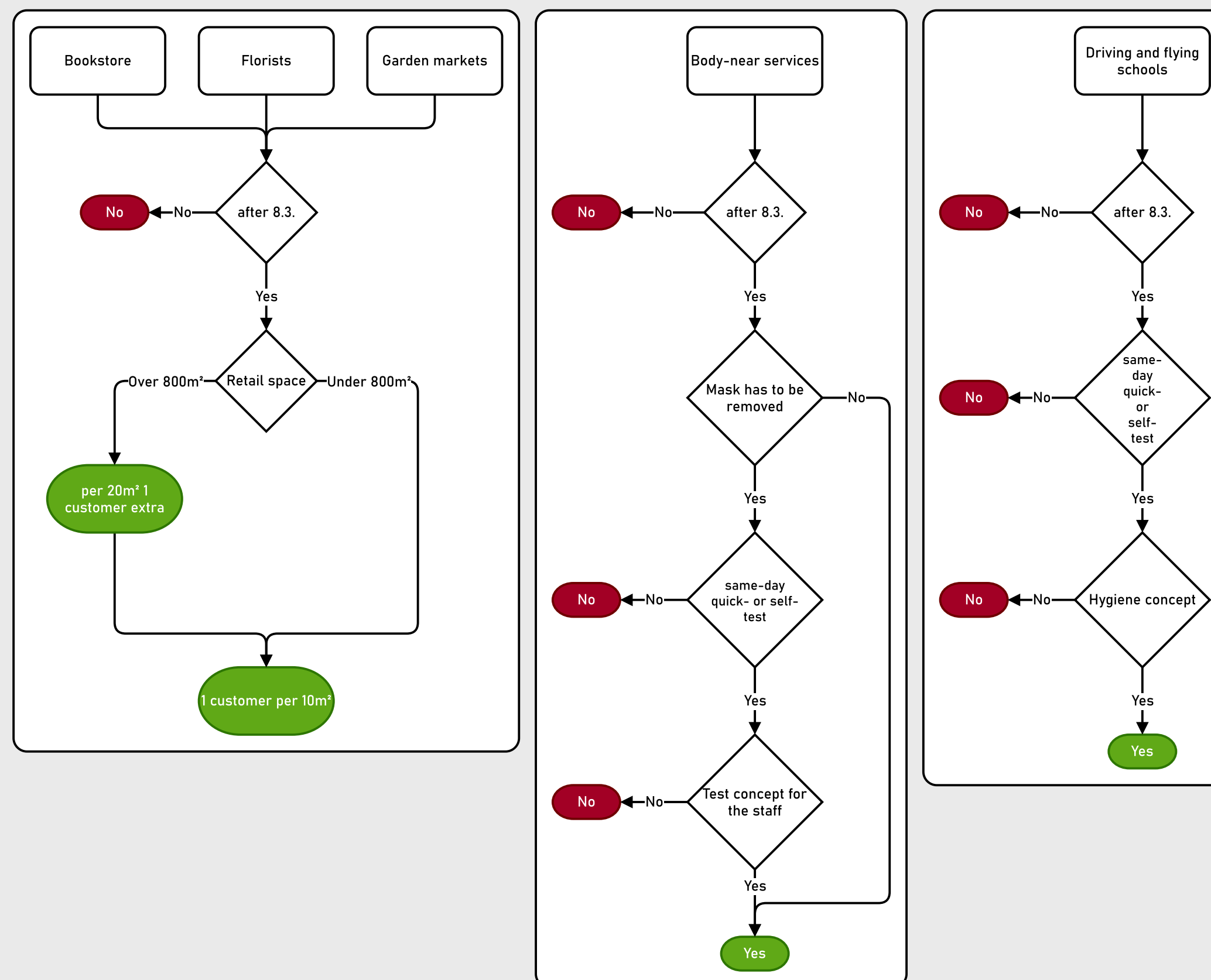


## 2. Opening step

Bookstores and body-near services

The second opening step is scheduled for March 8. Bookstores, florists and garden centers are classified as daily necessities retailers. They can therefore also reopen with appropriate hygiene concepts and a limit on the number of customers. Provided is one customer per 10 square meters for the first 800 square meters of retail area and another for each additional 20 square meters of retail area.

Also from March 8, the previously still closed near-body service businesses and driving and flying schools can reopen with appropriate hygiene concepts. For services where a mask cannot be worn permanently (such as cosmetics or shaving), a daily negative Covid-19 quick or self-test of the customer and a testing concept for the staff are prerequisites.



## 3. Opening step

Retail, museums, outdoor sports

A third opening step is possible in countries from March 8 depending on the incidence of infection.

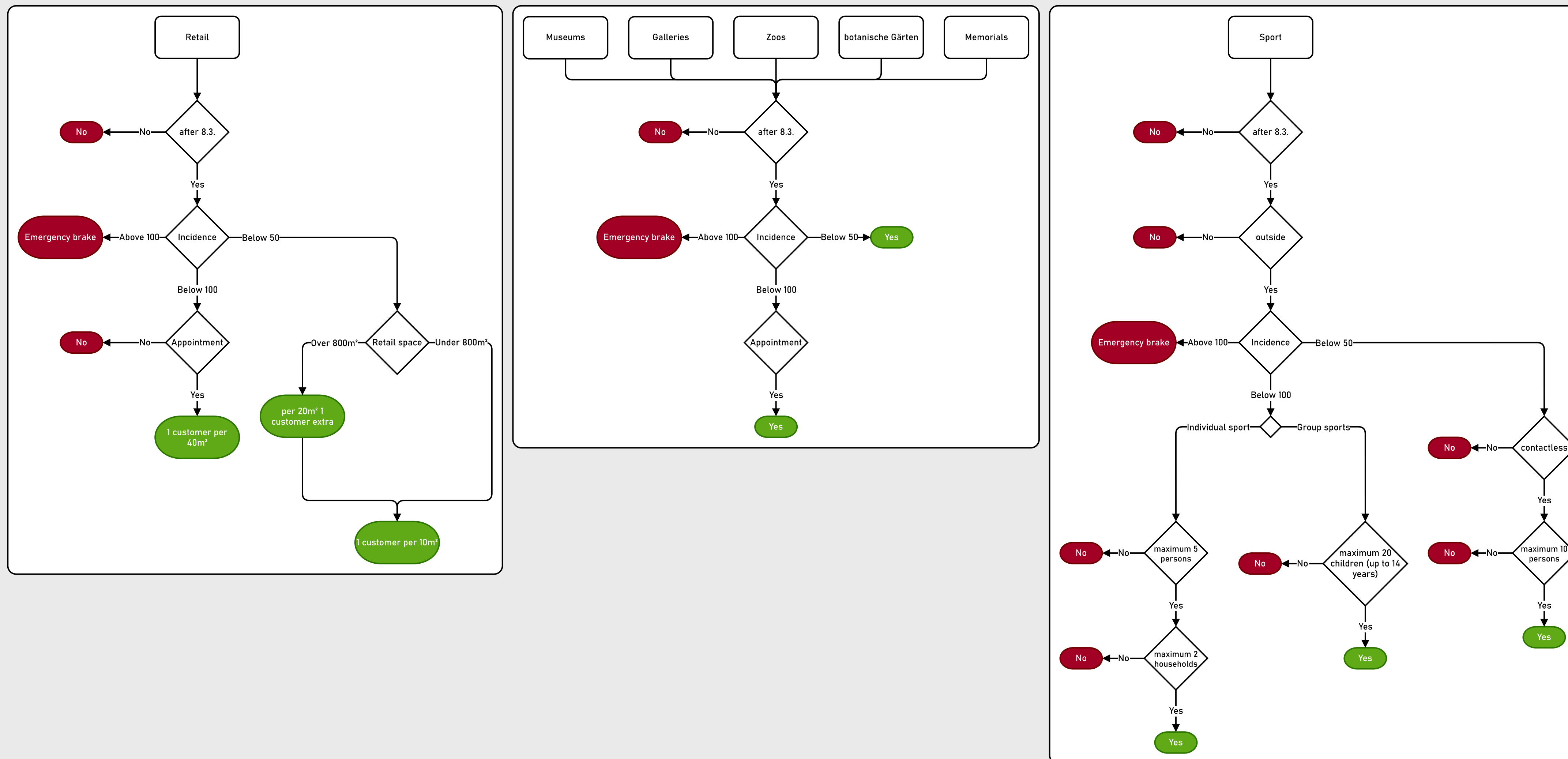
When the 7-day incidence is stable below 50 new infections/100,000 population:

- Opening retail. This limits the number of customers in the store - to one customer per 10 square meters for the first 800 square meters of retail area and one more for each additional 20 square meters.
- Opening of museums, galleries, zoological and botanical gardens, and memorials
- Non-contact sports in small groups of no more than ten people outdoors, including at outdoor sports facilities

When the 7-day incidence is stable or declining below 100 new infections/100,000 population:

- Retail stores can open with appointment shopping offers ("click and meet"); one customer per 40 square meters or part thereof of retail area with appointment booking for a limited period
- Museums, galleries, zoological/botanical gardens and memorials with appointment booking
- Individual sports with a maximum of five people from two households and sports in groups of up to 20 children up to 14 years old - in outdoor areas, including outdoor sports facilities

This includes a so-called **emergency brake**: If the 7-day incidence per 100,000 population rises above 100 for three consecutive days in the country or region, the rules that were in effect until March 7 will go back into effect starting on the second business day thereafter.



## 4. Opening step

Outdoor gastronomy, theater, sports

The fourth opening step depends on the incidence of infection and can occur if the 7-day incidence has not worsened for 14 days after the third opening step in the country or region.

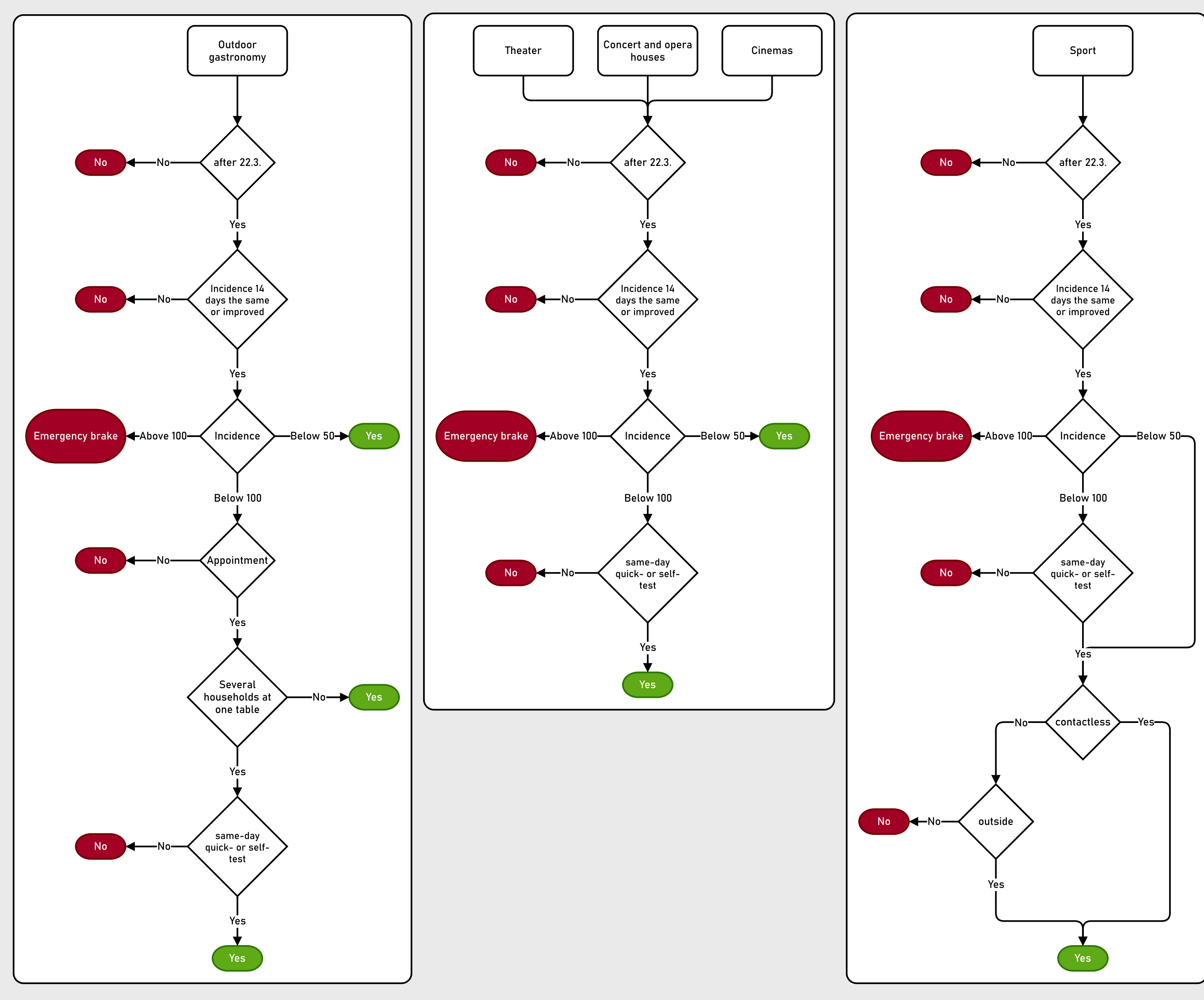
If the 7-day incidence is stable below 50 new infections/100,000 population:

- Opening outdoor dining
- Opening theaters, concert halls, opera houses, and movie theaters
- contactless indoor sports, contact outdoor sports

When the 7-day incidence is stable or declining below 100 new infections/100,000 population:

- Opening outdoor dining with appointment booking. If persons from multiple households sit at a table, a daily negative quick or self-test is required
- Opening theaters, concert halls, opera houses, and movie theaters to patrons with daily negative quick or self-test
- contactless indoor sports and outdoor contact sports with daily negative quick or self-test

providing for a so-called **emergency brake**: If the 7-day incidence per 100,000 population rises above 100 for three consecutive days in the country or region, the rules that were in effect until March 7 will go back into effect beginning the second business day thereafter.



## 5. Opening step

Recreational events, retail, sports

The fifth opening step can occur - again depending on the incidence of infection - if the 7-day incidence has not worsened for 14 days after the fourth opening step in the country or region.

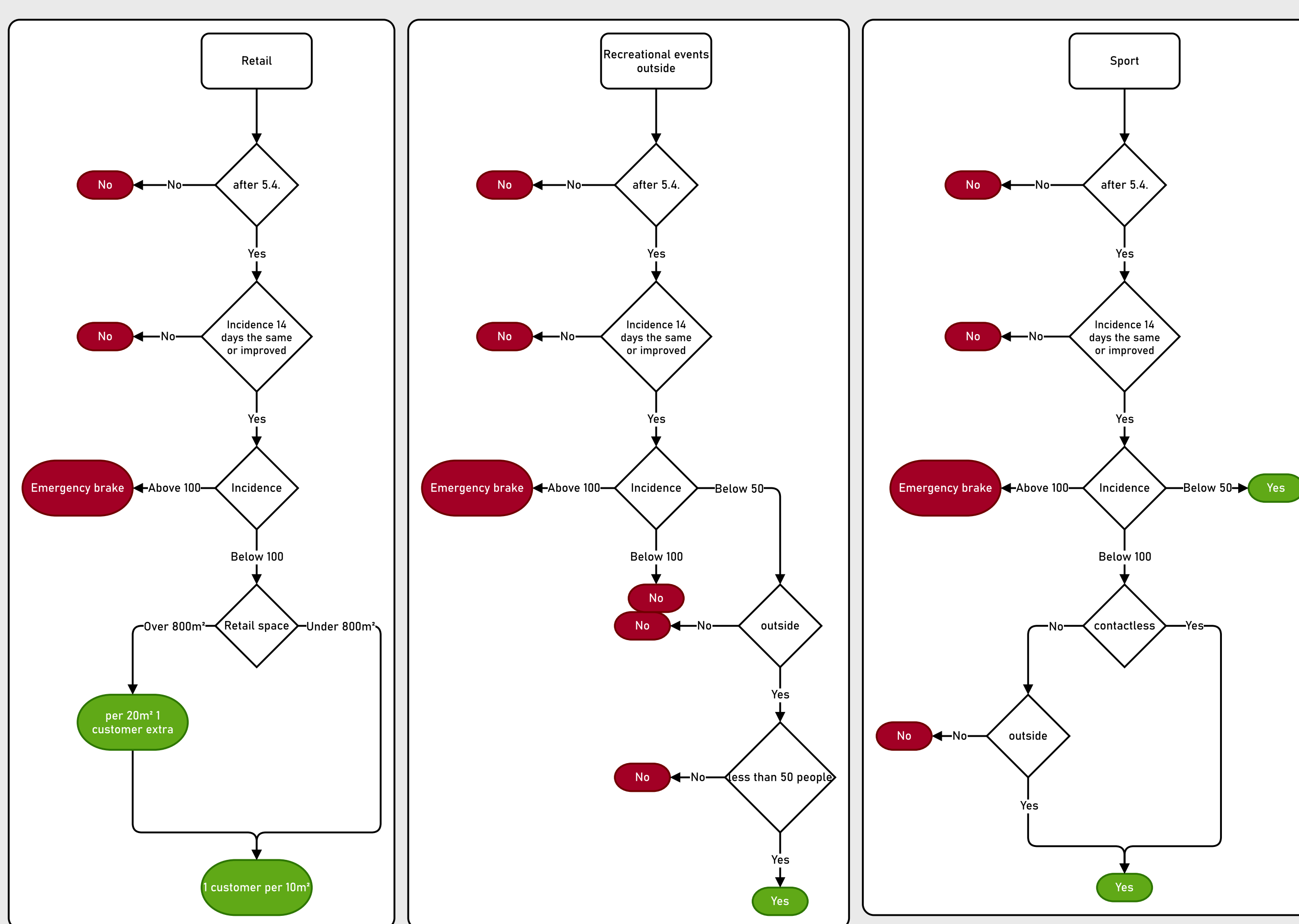
If the 7-day incidence is stable below 50 new infections/100,000 population:

- Outdoor recreational events with up to 50 participants
- Indoor contact sports

When the 7-day incidence is stable or declining between 35 and 100 new infections/100,000 population:

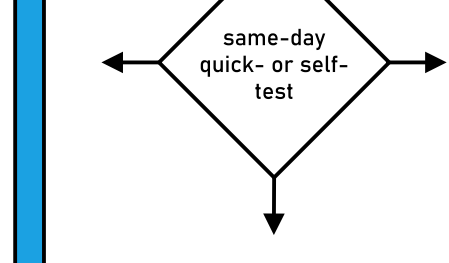
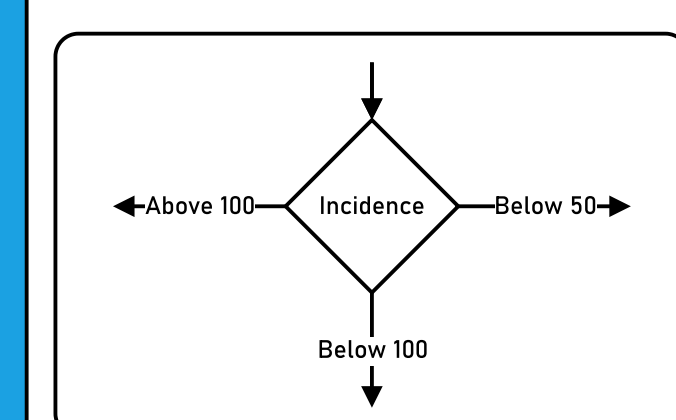
- Opening retail. This involves limiting the number of customers in the store - to one customer per 10 square meters for the first 800 square meters of retail area and another for each additional 20 square meters.
- Contactless sports indoors, contact sports outdoors (without Covid-19 testing)

This involves a so-called **emergency brake**: If the 7-day incidence per 100,000 population rises above 100 for three consecutive days in the country or region, the rules that applied until March 7 will go back into effect starting on the second business day thereafter.

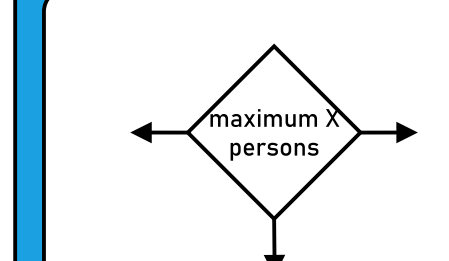


## Explanation

The term **Incidence** describes the 7-day incidence of the last 3 days



The test must show that there was no infection with SARS-CoV-2 at the time of testing



Children under 14 are not counted

## Emergency brake

This includes a so-called **emergency brake**: If the 7-day incidence per 100,000 inhabitants rises above 100 for three consecutive days in the country or region, the rules that applied until March 7 will come into force again as of the second following business day.

